

*All images are for representation purpose only.

BEST TIME TO BUY INTO
GOLD CLASS LIFESTYLE
WITH THE SMARTEST HOME BUYING
OPPORTUNITY OF MUMBAI

- 94,00,000 Sq. Ft. Under Development
- 60,28,787 Sq. Ft. Delivered
- 150+ Buildings Delivered
- Since 1980
- 7,390+ Homes



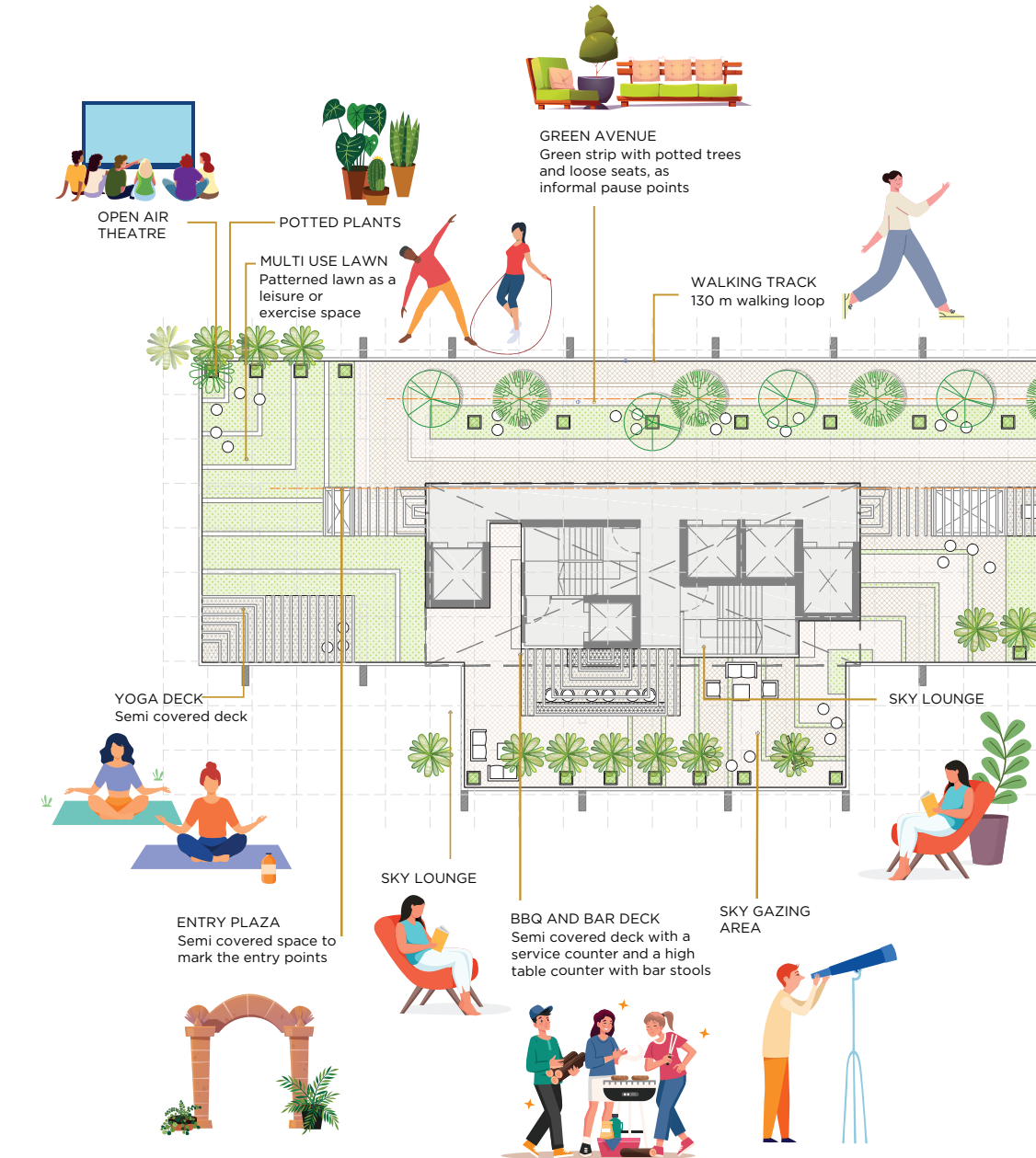
#ADDRAUNAKTOYOURLIFE

The project has been registered via MAHARERA Registration Number F1 - P51700033762, F2 - P51700033757, F3 - P51700033972 and is available on the website: <https://maharera.mahaonline.gov.in> under registered projects.

Disclaimer: The amenities, specifications, facilities, surrounding infrastructure, stock images and features shown and/or mentioned and the image renders used herein are purely indicative and promotional usage and may differ from the actuals. This is only an invitation to offer and does not constitute an offer. The purpose of this brochure is to indicate to the customers the extent of the amenities and facility that may come up in the project as per the present approved layout. Any prospective sale shall strictly be governed by the terms and conditions of the agreement for sale to be entered into between the parties.



Thoughtfully Planned 1 & 2 BHK Gold Class Homes



RAUNAK GOLDEN TICKET

The Smartest Development in Kalyan's only In-City Township

With a stunning design reflecting the best architecture in the world, the upcoming development at Raunak City - Golden Ticket comes with the finest fittings, finishes, and luxury amenities. These are the most thoughtfully planned cluster of towers offering the best of everything, inside and outside the homes.



30+ LUXURY AMENITIES



KALYAN

The final growth centre of Mumbai is home to the smartest urban centre.

4 Mega Projects of Kalyan that will drive the next investment wave.

- 45m ring road connecting to the upcoming metro station at Durgadi Fort.
- 'Growth city' proposed for KDMC with a new BKC type hub coming up in Kalyan.
- Upcoming metro line, that will connect Thane and Navi Mumbai.
- Durgadi Bridge 6-lane flyover, all set to decongest connectivity between Thane and Kalyan.



Infrastructure Growth Centre

- A 31Km long ring road from Dombivli to Titwala through Kalyan.
- Proposed Airoli-Kalyan Freeway to ease connectivity to Thane & Mumbai.
- 24Km long Kalyan - Talaja Metro to be operational soon.

Social Growth Centre

- Some of the finest educational institutes in the region - Mumbai University subcentre, Birla University, Birla School, Don Bosco High School, The Cambridge International School.
- The best medical facilities - Fortis Hospital, Hiranandani Hospital, Kalyan Multi-Speciality, KDMC General Hospital & Holy Cross Hospital.
- Finest shopping & entertainment avenues - Metro Junction Mall, Sarvodaya Mall & D-mart.

Lifestyle Growth Centre

- 7 large lakes & 32 kms long waterfront to be developed for future social gatherings.
- Numerous public recreation & green spaces across Kalyan.

Commercial Growth Centre

- Strategically located to IT Hubs and commercial centres in Navi Mumbai like Reliance corporate park.
- Advantageously positioned to leverage economic opportunities due to national infrastructure projects like Delhi Mumbai Industrial Corridor [DMIC].

Investment Growth Centre

- 125% price appreciation in the last 10 years makes Kalyan the Final Growth Centre of Mumbai.
- An opportune time to invest and take advantage of the inflection point, just before the growth explosion.

Smart Home Automation By



Semi-modular Kitchen By



Clear French Windows By



Sanitary Ware By



Fittings By



Relaxing Lounge

Martial Arts Studio

Dance Studio

Music Room

Kids Crèche

Meditation Centre

Virtual Game Centre

Leisure Lawn

Sky Lounge

Aerobics & Zumba Room

Kids Adventure Area

Indoor Games Room

Breakout Lounge

Library + Study

Service Counters

BBQ Deck

Shaded Coves

Green Coves

Multi-use Party Lawn

TOT Lot

Breakout Zones

Swing Cove

Interactive Courts

Gym

Walking Sky Track

Swing Deck

Entry Plaza

Bar Deck

Yoga Deck

Snooker

Table Tennis

Carrom

Fussball

Massage and Steam Room

Sky Observation Plaza